



# Caledonian

## FIREGUARD Flame Retardant Power & Control Cables

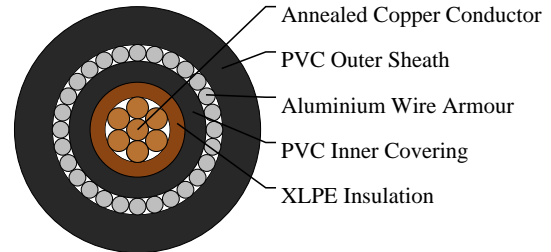
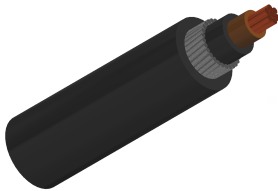
www.caledonian-cables.co.uk

sales@caledonian-cables.co.uk

### 600/1000V XLPE Insulated, PVC Sheathed, Armoured Power Cables to IEC 60502 (Single Core)

FGD300 1RVMAV-R (CU/XLPE/PVC/AWA/PVC 600/1000V Class 2)

VDE Code: N2XRY



### APPLICATIONS

The cables are mainly used in power stations, mass transit underground passenger systems, airports, petrochemical plants, hotels, hospitals, and high-rise buildings. This product type is TUV approved.

### STANDARDS

Basic design to IEC 60502-1

### APPROVALS

TUV Certification (Z1 17 01 98200 004)

### FIRE PERFORMANCE

Flame Retardance (Single Vertical Wire Test)	IEC 60332-1
--	-------------

### VOLTAGE RATING

600/1000V

### CABLE CONSTRUCTION

Conductor: Annealed copper wire, stranded according to IEC 60228 class 2.

Insulation: XLPE according to IEC 60502-1.

Inner Covering: Extruded PVC or polymeric compound.

Armouring: Aluminium wire

Outer Sheath: Extruded PVC Type ST1/ST2 according to IEC 60502-1.

Outer Sheath Option: UV resistance, hydrocarbon resistance, oil resistance, anti rodent and anti termite properties can be offered as option. Compliance to fire performance standard (IEC 60332-1, IEC 60332-3, UL 1581, UL 1666 etc) depends on the oxygen index of the PVC compound and the overall cable design. LSPVC can also be provided upon request.

### COLOUR CODE

Insulation Colour: Brown or blue, other colours can be offered upon request.

Sheath Colour: Black, other colours can be offered upon request.



# Caledonian

## FIREGUARD Flame Retardant Power & Control Cables

www.caledonian-cables.co.uk

sales@caledonian-cables.co.uk

### PHYSICAL AND THERMAL PROPERTIES

Maximum temperature range during operation: 80°C (For ST1 Sheath); 90°C (For ST2 Sheath)

Maximum short circuit temperature (5 Seconds): 250°C

Minimum bending radius:

Circular copper conductors: 6 x Overall Diameter

Shaped copper conductors: 8 x Overall Diameter

### DIMENSION AND PARAMETERS

No. of Cores × Cross-sectional Area	Conductor Class	Nominal Insulation Thickness	Nominal Thickness of Inner Covering	Nominal Sheath Thickness	Nominal Aluminum Wire Armour Diameter	Overall Diameter (max.)	Approx. Weight
No. x mm <sup>2</sup>		mm	mm	mm	mm	mm	kg/km
1x6	2	0.7	1.0	1.8	0.8	11.4	308



Rated voltage



Flame Retardant  
IEC 60332-1



IEC60502-1